



AFFINIS PRECIOUS[®]

Silver and Gold Wash Materials

Superior flow properties

Outstanding margin readability

Faster thermo-reactive setting

/// COLTENE

Silver and Gold Wash Materials

Superior flow properties

Outstanding margin readability

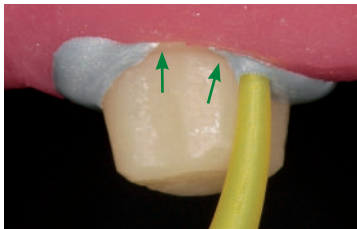
Faster thermo-reactive setting



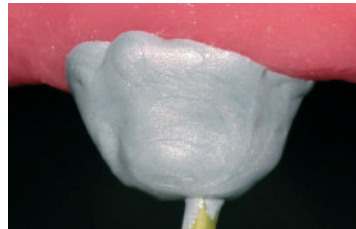
Superior flow properties where it counts - In the mouth...

AFFINIS PRECIOUS® polyvinylsiloxane (PVS) wash materials have a contact angle of only 10°, this is substantially lower than leading competitive brands. Its superior flow properties allow the impression material to easily capture all critical surface details of the preparations in a wet environment.

AFFINIS PRECIOUS*



AFFINIS PRECIOUS flows directly into the sulcus preventing air entrapments.

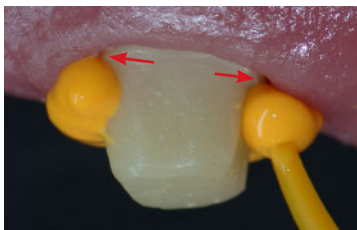


Thixotropic properties prevent slumping and dripping.



AFFINIS PRECIOUS wash materials produce accurate, void free impressions.

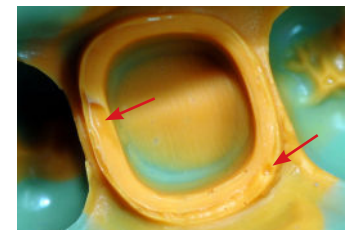
Competitive Material*



Other materials with less flow can cause air entrapments.



Other materials with less flow may create voids.



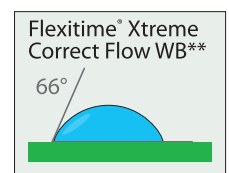
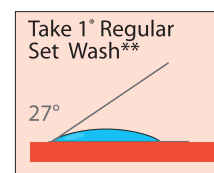
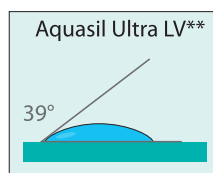
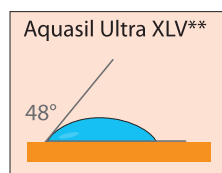
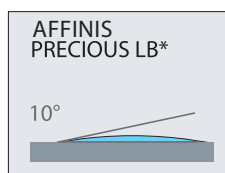
Air entrapments can lead to voids and margin distortions.

...and in the lab

AFFINIS PRECIOUS was developed to produce accurate results in the mouth and in the lab. The wettability allows the wet gypsum to flow more easily into the impression, producing more accurate stone models. An accurate model is the key for the lab technician to create proper fitting restorations.

Model Replication Accuracy*

Contact angle of water droplet after being placed on cured light body impression materials for 10 sec.



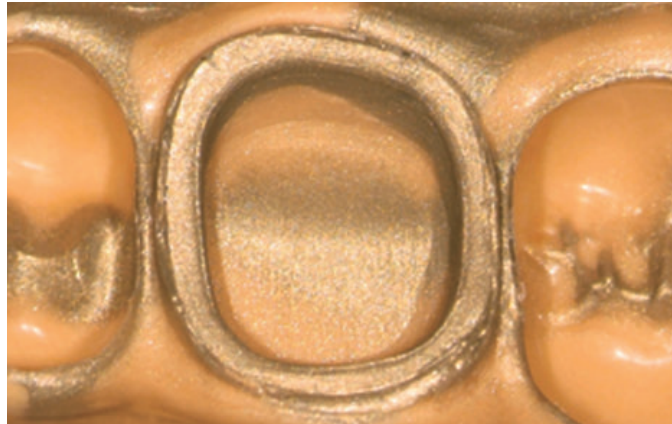
*Internal Data

**Aquasil Ultra XLV, Aquasil Ultra LV, Take 1® and Flexitime® Xtreme are not registered or trademarked by Coltène/Whaledent Inc.

Outstanding margin readability with Silver and Gold wash colors



AFFINIS PRECIOUS Silver light body wash



AFFINIS PRECIOUS Gold regular body wash

AFFINIS PRECIOUS provides you with exceptional readability of marginal detail. The unique silver and gold pigmentation drastically reduces the light scattering effect, thus improving the visibility of the margins.

Faster thermo-reactive setting

AFFINIS PRECIOUS wash materials have an accelerated setting time once the tray has been seated and the material has reached its final film thickness. This quick initial snap set reduces the risk of distortion.

With a variable working time from five seconds to one minute and a minimum oral set time of two minutes, **AFFINIS PRECIOUS** is ideal for single and multiple unit impressions.

Clinical Case:

Dr. Sander, Austria, Single-Step Technique, with **AFFINIS PRECIOUS** light body and **AFFINIS**® heavy body



Application of **AFFINIS PRECIOUS** light body.



Instant wetting feature of **AFFINIS PRECIOUS** during application, captures marginal details.



Superior wetting properties and optimal flow prevent air entrapments and margin distortions.



Preparation is properly covered and material does not drip off the preparation.



Seat impression tray and let material set.



Perfect impression with **AFFINIS PRECIOUS** light body in combination with **AFFINIS**® heavy body.



Order Information

AFFINIS PRECIOUS 50 ml System

6775	AFFINIS PRECIOUS light body - Single Pack Silver 2 x 50 ml Cartridges, 12 pcs Universal Mixing Tips
6776	AFFINIS PRECIOUS regular body - Single Pack Gold 2 x 50 ml Cartridges, 12 pcs Universal Mixing Tips

Accessories: 50 ml Wash Material

6900	Dispenser 50 ml	1 pc
6001 9663	Universal Mixing Tips	40 pcs
6555	Oral Tips, yellow	100 pcs

AFFINIS PRECIOUS microSystem*

6779	AFFINIS PRECIOUS light body microSystem - Single Pack Silver 4 x 25 ml Cartridges microSystem, 18 pcs Universal Mixing Tips, 18 pcs Oral Tips, yellow
6780	AFFINIS PRECIOUS regular body microSystem - Single Pack Gold 4 x 25 ml Cartridges microSystem, 18 pcs Universal Mixing Tips, 18 pcs Oral Tips, yellow

Accessories: microSystem wash material

6270	MKII Dispenser microSystem	1 pcs
6001 9663	Universal Mixing Tips	40 pcs
6210	MicroOral Tips, clear	100 pcs
6555	Oral Tips, yellow	100 pcs

AFFINIS Tray Materials

6530	AFFINIS putty soft Base and Catalyst, each 300 ml
6535	AFFINIS putty super soft Base and Catalyst, each 300 ml
6590	AFFINIS heavy body 50 ml 2 x 50 ml Cartridges, 6 pcs Mixing Tips (Large/Turquoise)
6520	AFFINIS heavy body 75 ml 2 x 75 ml Cartridges, 8 pcs Mixing Tips (Large/Turquoise)
6547	AFFINIS MonoBody 75 ml 2 x 75 ml Cartridges, 8 pcs Mixing Tips (Large/Turquoise)
6487	AFFINIS System 360 heavy body - Refill Pack 2 x 380 ml Refill package Base and Refill package Catalyst, 1 Fixation Ring
6485	AFFINIS System 360 heavy body Starter Kit 1 x 380 ml Base and Catalyst, 1 Rigid cartridge, 1 Fixation Ring 10 x Dynamic Mixing Tips (Yellow)
6482	AFFINIS MonoBody System - Refill Pack 2 x 380 ml Refill package Base and Catalyst, 1 Fixation Ring
6480	AFFINIS System 360 MonoBody Starter Kit 1 x 380 ml Base and Catalyst, 1 Rigid Cartridge, 1 Fixation Ring, 10 x Dynamic Mixing Tips (Yellow)



Accessories: Tray Material

6900	Dispenser 50/75 ml	1 pc
6162	Dynamic Mixing Tips (Yellow)	40 pcs
6552	Mixing Tips (Large/Turquoise)	40 pcs

Coltene/Whaledent Inc.
235 Ascot Parkway
Cuyahoga Falls, Ohio 44223 / USA
Tel. USA & Canada +1 800 221 3046
+1 330 916 8800
Fax +1 330 645 8704
info.us@coltene.com

Coltene/Whaledent AG
Feldwiesenstrasse 20
9450 Altstätten/Switzerland
Tel. +41 (0)71 757 53 00
Fax +41 (0)71 757 53 01
office.ch@coltene.com

Coltene/Whaledent GmbH + Co. KG
Raiffeisenstrasse 30
89129 Langenau / Germany
Tel. +49 (0) 7345 805 0
Fax +49 (0) 7345 805 201
info.de@coltene.com



COLTENE