



AFFINIS®

THE ART OF IMPRESSIONS

AFFINIS® Perfect impressions

 **COLTENE**

The Coltène/Whaledent dental group is active throughout the world in the development, manufacturing and distribution of high quality dental products. With manufacturing based in Europe and the USA and a global network of agencies and competent trading partners, we provide superior dental solutions.

Coltène/Whaledent Dental Group
Headquarters – Altstätten,
Switzerland.



Our modern AFFINIS production
facilities.



All stages of development and
production are scientifically
monitored.



CONTENTS

| | | |
|------|-------|--|
| Page | 6-7 | The challenge of taking a perfect impression |
| Page | 8-15 | Advantages and solutions |
| Page | 16-22 | Techniques with AFFINIS® |
| Page | 23-25 | Material consistencies that meet your needs |
| Page | 26-28 | Application of AFFINIS® |
| Page | 29 | Trays and adhesives |
| Page | 30 | Bite registration |
| Page | 31-33 | Clinical report |
| Page | 34-35 | The product range |

7:0





ALL THE ADVANTAGES OF AFFINIS® IMPRESSION MATERIALS AT A GLANCE:

- 1:0** Excellent flow properties in a moist environment
- 2:0** Ideal working time, optimal intraoral setting time
- 3:0** Excellent readability
- 4:0** Minimizes the risk of air entrapments and marginal distortions
- 5:0** 98.4% perfect reproduction of the marginal contours
- 6:0** First-ever autoclavable impressions
- 7:0** Maximum precision during model fabrication

THE CHALLENGE OF TAKING A PERFECT IMPRESSION

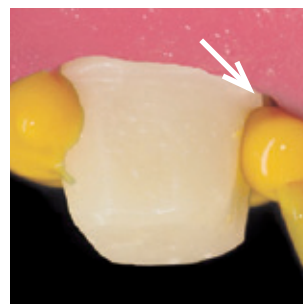
Scientific studies have consistently demonstrated that up to 90%* of impressions are inaccurate.

The key reasons behind many inaccurate impressions is due to poor surface affinity and inadequate flowability of an impression material onto moist tooth structure. These issues can cause air entrapments that can consequently lead to trapped air voids and distortions, which result in time-consuming remakes of the impression.

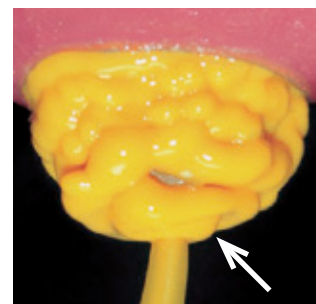
*Statement from the videotape "The Perfect Impression" by Gordon J. Christensen, DDS, MSD, PhD.

Illustration of a material that is not self contouring

Poor affinity of the impression material to moist tooth structure can cause air entrapments.

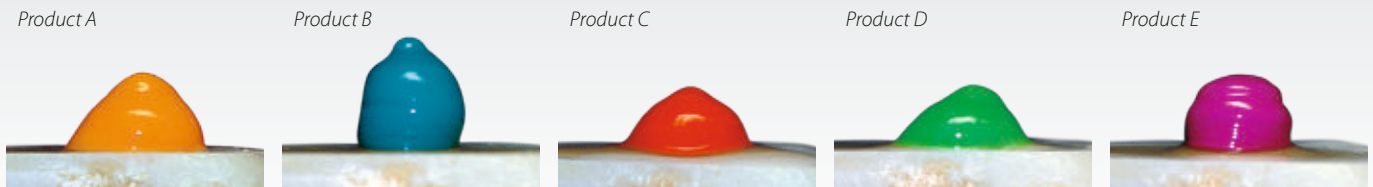


Uneven leveling and thixotropy can result in inaccurate contours.



Surface affinity on moist dentin

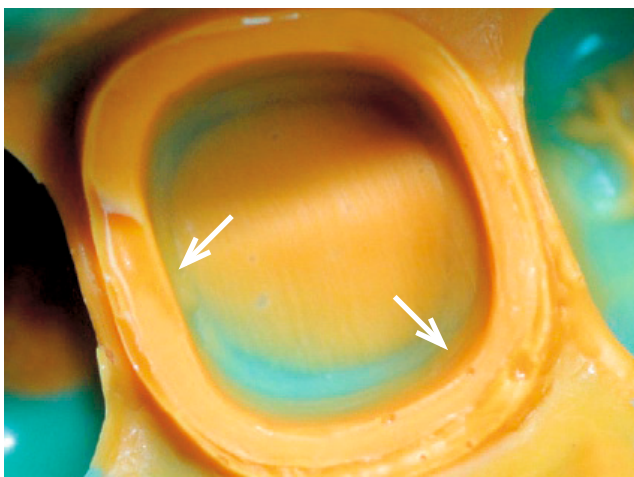
Competitors' products



Defined amount of freshly mixed impression material on moist dentin – 10 seconds after application (internal data).



The result: Any impression material with missing surface affinity may lead to air entrapments and voids. This can result in cavities, defective points, margin distortions or distortions in the impression. The consequences are inaccuracies in dental restorations.



ADVANTAGES AND SOLUTIONS

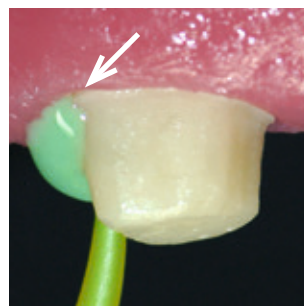
1:0 Excellent flow properties in a moist environment

98.4% perfect reproduction of marginal contours* thanks to the optimal affinity of AFFINIS

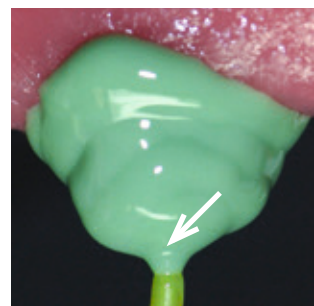
In general, the addition of surface-activated substances with conventional impression materials not only improves the wetting properties, but also restricts the flow. The material has a tendency to trap air voids. In contrast, AFFINIS provides ideal flow properties (self-contouring consistency) due to the structure-breaking properties of its active surfactant agent. The mixed material also delivers excellent stability and does not drip from the tooth.

* The International Journal of Prosthodontics. May 2007, vol 20, nr. 3

*AFFINIS flows directly
onto the tooth
and into the sulcus.*



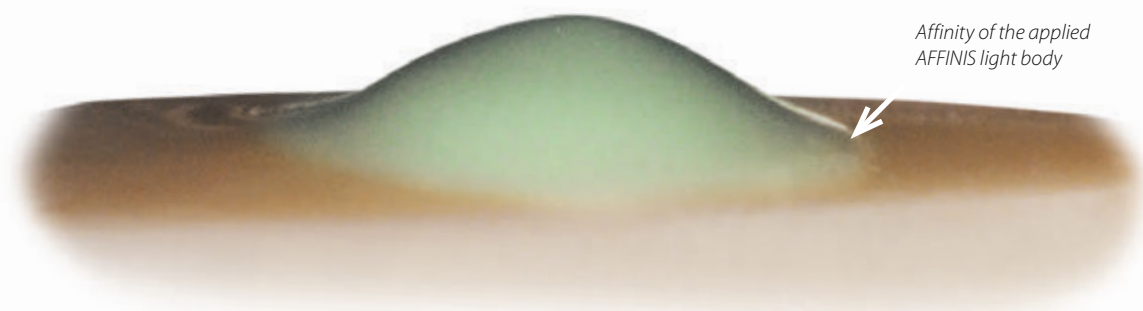
*AFFINIS does not drip.
An ideal thixotropic balance
between its self-contouring
consistency and firmness.*





<10°

AFFINIS®: Excellent wettability on moist tooth surfaces



Affinity of the applied
AFFINIS light body

The self-contouring consistency and the highly active surfactant agent produces an innovative affinity to the moist tooth structure (internal photo).

≤ 1 min.

AFFINIS®: Optimal results with an ideal working time

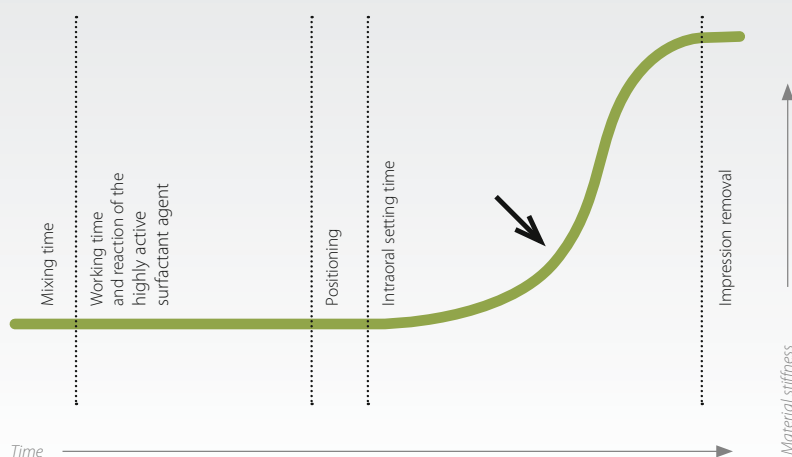
2:0 Ideal working time, optimal intraoral setting time

Optimized setting properties

Thanks to the AFFINIS Snapset, AFFINIS materials offer variable application times up to one minute as well as a short intraoral setting time of ≥ 2 minutes (MonoBody ≥ 2 minutes 30 seconds).

Its generous amount of working time ensures for stress-free intraoral application of the material. Once the impression tray is seated, the setting process is accelerated due to its thermo-active formula. Its short intraoral reaction phase saves time and comforts the patient.

AFFINIS Snapset – High Snapset minimizes the risk of inaccuracies due to inadvertent movements (internal data)



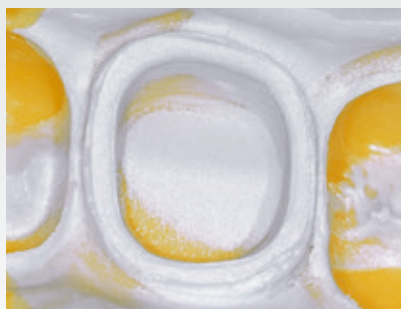
3:0 Excellent readability

Gold and silver pigmentation ensures outstanding readability

AFFINIS PRECIOUS features outstanding readability of the details. Its unique silver and gold pigmentation significantly reduces light diffusion and improves the visual perception of details. The quality of the impression can be easily and reliably checked thanks to its outstanding readability.



AFFINIS PRECIOUS
light body



AFFINIS PRECIOUS
regular body

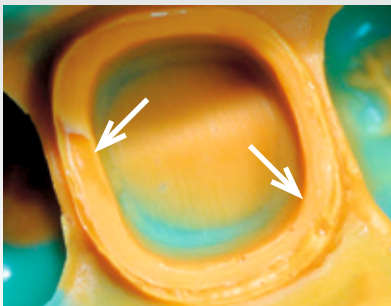


Gold!

AFFINIS®PRECIOUS: The highest standard in impression taking

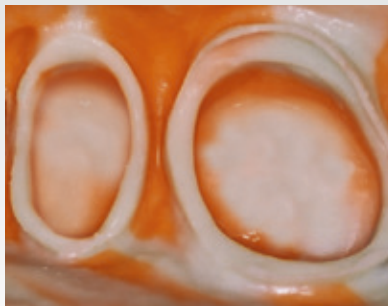
4:0 Minimizes the risk of air entrapment and marginal distortions

AFFINIS light body wash materials wet the tooth and gingiva extremely fast and effectively. Its distinct surface affinity and flowability virtually eliminates the risk of air voids and distortions.



Competitor

Air voids and distortions due to poor affinity during the working time.



The difference – no air voids

AFFINIS regular body with AFFINIS heavy body. AFFINIS PRECIOUS regular body with AFFINIS heavy body.



(internal Data)

Min.

Air voids and distortions are reduced to a minimum with AFFINIS®



98,4 %

Perfect impressions

5:0 98,4% perfect reproduction of marginal contours

Significant advancements for A-silicones

The introduction of AFFINIS with its innovative surface affinity and optimal flow properties is an important development towards the enhancement of A-silicone impression materials. With the proper preparation, tissue management and clean margins, these properties will deliver perfect impressions of the marginal contours and prepared teeth in virtually 100% of the cases.



Clinical results from the University of Innsbruck (Austria)

Clinical tests at the University of Innsbruck confirmed the high success rate achieved with AFFINIS. Only 1.6% of impressions showed defects or distortions in the marginal area. Dentists confirmed 98.4% perfect results using AFFINIS.

| Preparations (1000 units) | | | | | | |
|---------------------------|--------|----------------|---------|-------------|-------|------------------|
| Inlays | Onlays | Crowns | Veneers | Implants | Posts | Adhesive Wings |
| 201 | 156 | 394 | 96 | 76 | 65 | 12 |
| Area (1000 units) | | | | | | |
| Supragingival | | Equigingival | | Subgingival | | Deep Subgingival |
| 196 | | 272 | | 454 | | 78 |
| Rating | | | | | | |
| Perfect | | Minor Defects* | | Unusable | | |
| 924 | | 60 | | 16 | | |

98.4 %

98.4 %

Perfect Impressions

* Minor defects: Such as small air voids in the impression that did not extend to the preparation margin.

The International Journal of Prosthodontics. May 2007, vol 20, nr. 3

6:0 First-ever autoclavable impressions

First-ever autoclavable impressions

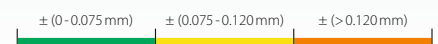
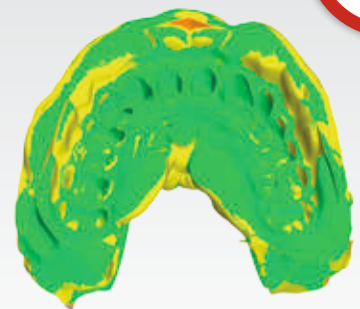
All AFFINIS and AFFINIS PRECIOUS impressions can be autoclaved at 134°C without losing its unique properties. The innovative autoclavable AFFINIS impression materials, impression trays and special adhesive system provides a new perspective on prevention.

AFFINIS impressions – not only clean, but also sterile.

Complex computer tomographic and clinical measurements as well as comparisons confirm the excellent dimensional stability of the optimized AFFINIS impression material, even after autoclaving. A current study by Dr Brian Miller et al. at King's College London Dental Institute confirms the quality of the AFFINIS impression materials, adhesive (Coltène Adhesive AC) and trays (PRESIDENT impression trays AC).

Dimensional changes after autoclaving

*Comprehensive quality-controlled studies by dentists and laboratories demonstrated that highly precise and reliable autoclavable impressions and accurately fitting restorations can be attained, regardless of the impression taking technique or viscosity.
(internal data)*



134°C

Autoclavable precision impressions – security made to measure

Max.

Highly active surfactants deliver maximum precision and efficiency

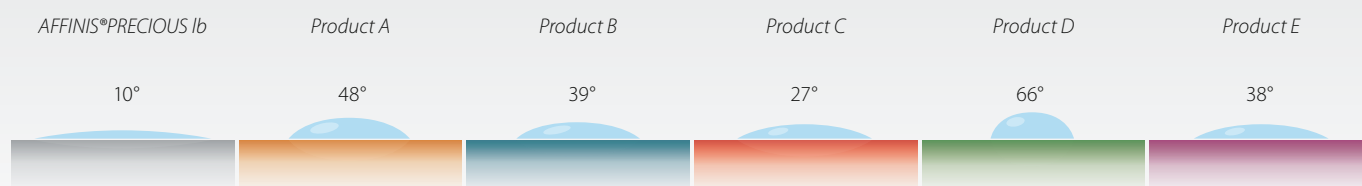
7:0 Maximum precision during model fabrication

More accurate models

AFFINIS distinguishes itself by its quick and exceptional wettability of the model stone in the impression. The reason for this is due to its highly active surfactant agent. This feature is crucial for dental technicians when pouring the stone model.

Precision when fabricating the model

Contact angle of a drop of water after placing it on cured light body impression material after 10 seconds (internal data).



AFFINIS was developed to attain highly precise results intraorally and in the laboratory. A precision model is the key for accurately fitting restorations.



AFFINIS model from the perspective of a dental technician.

TECHNIQUES WITH AFFINIS[®]

Page

18



One-step putty/wash impression

Page

19



Two-step putty/wash impression

Page

20



Monophase impression

Page

21



Functional impression

Page

22



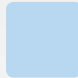

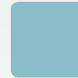


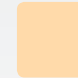
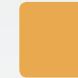







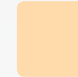



















Transfer impression



Reline impression

Recommended material combinations

| Wash material | | | | Monophase material | Tray material | | | |
|---|---|---|---|---|---|---|---|---|
| AFFINIS light body <i>fast</i> light body | AFFINIS PRECIOUS light body | AFFINIS regular body <i>fast</i> regular body | AFFINIS PRECIOUS regular body | AFFINIS MonoBody | AFFINIS heavy body <i>fast</i> heavy body | AFFINIS Putty System 360 | AFFINIS Putty super soft | AFFINIS Putty soft <i>fast</i> Putty soft |
|  |  |  |  |  |  |  |  |  |
|  |  |  |  |  |  |  |  |  |
| | | | |  | | | | |
|  |  |  |  |  |  | | | |
| | | | |  |  |  | | |
|  |  |  |  |  |  | | | |

low viscosity ← high viscosity →



The result: Outstanding detail.

The pressure of AFFINIS heavy body and the perfect flow properties of AFFINIS regular body deliver outstanding detail.

One-step putty/wash impression



Easy filling of the tray

The tray can be quickly and easily filled with AFFINIS heavy body, System 360 using the automatic mixer.



Surface-activation

While the assistant fills the tray, the dentist can syringe around the preparations using the preferred AFFINIS wash material.



Hold in situ

After applying gentle pressure, the tray must be held in situ during the setting phase.



The perfect impression

A perfect AFFINIS impression is the key for accurately fitting, laboratory fabricated restorations. It provides the ideal basis for successful team-work between the dentist and the dental technician.



Synchronized working

The wash material can be applied when the tray is being filled. Begin filling the tray so that filling and syringing are completed at the same time. Always insert the oral tip into freshly extruded material in order to prevent air voids. Insert the tray into the mouth immediately! Gently press for 2 to 3 seconds and hold in situ until the material is completely set.

Maximize the working time

Higher temperatures will accelerate the setting process and lower temperatures will slow down the setting process. The material can be placed in the refrigerator to extend the working time.

▼ **CLINICAL TIP**



The result: Optimal detail reproduction.

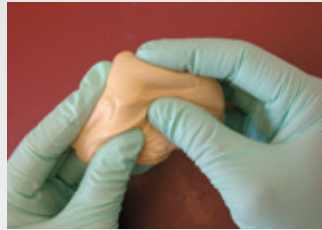
Using your preferred combination of AFFINIS material, you can obtain accurate detail reproduction and visually manageable end results. The consistency, setting time and colour of the materials are compatible with each other.

Two-step putty/wash impression



Dispensing

The mixing ratio for all hand mixed AFFINIS putties is 1:1.



Easy mixing

AFFINIS putty soft and super soft are very easy to mix. The consistency of the base and catalyst are highly compatible, allowing them to be mixed quickly to a homogeneous consistency.



Positioning

Positioning of the first putty impression and hold in situ for 2 min. Wash the putty impression thoroughly with lukewarm water, dry and cut ventilation channels using a carving knife. This helps prevent an accumulation of wash material and any inaccuracies in the restoration.



Wash impression

Syringe around the preparation with AFFINIS PRECIOUS regular body. The surface activation of the wash material and high pressure of the AFFINIS putty prevents distortions in the impression caused by saliva and blood residue. This feature ensures for the highest amount of detail reproduction possible.



Quick and reliable

The wash material should be applied into the trimmed putty impression prior to syringing around the preparation to ensure that a sufficient amount of wash material is used.

Maximize the working time

Higher temperatures will accelerate the setting process and lower temperatures will slow down the setting process. The material can be placed in the refrigerator to extend the working time.

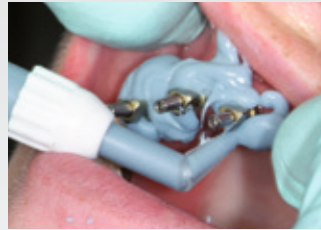
▼ CLINICAL TIP



The result: Tear-resistant and elastic.

Impressions are residue-free and easily removed from the patient's mouth thanks to its high elastic recovery, optimal tear-resistance and elasticity of AFFINIS MonoBody. This guarantees precise end results.

Monophase impression



Stable

AFFINIS MonoBody features high stability as well as an ideal thixotropy.

Efficient

Easily filled into the impression syringe of the mixing unit.

Flowable

The material is thixotropic when syringed with optimal flow properties under pressure.

Maximum precision

The material flows when gentle pressure is applied during intraoral positioning, capturing the finest details. This ensures for a highly precise reproduction of the preparation. The tray must be held in situ during the intraoral setting phase. AFFINIS MonoBody does not have any taste or odor to prevent additional salivation.



▼ **CLINICAL TIP**

AFFINIS MonoBody can also be used as the tray material for the one-step putty/wash technique.

We recommend using either AFFINIS light body or regular body as the wash material.



The result: Dimensionally stable.

Optimum dimensional stability ensures for long-term precision.

Functional impression



Precise application

After coating the border of the tray with Coltène adhesive, AFFINIS System 75 heavy body is applied around the functional margin.

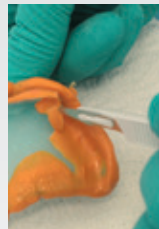


Positioning

Position the custom tray. The viscosity is ideal for detailed reproduction of all functional movements.

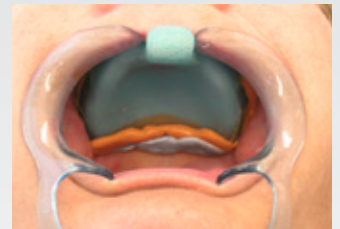
Hydrocolloid-like properties

AFFINIS heavy body has hydrocolloid-like properties ensuring for an optimal contact to the mucosa in the moist oral environment.



Cleaning

After the functional marginal impression has been cleaned with luke-warm water, dried and prepared with a scalpel, coat the base of the tray with adhesive and cover with wash material.

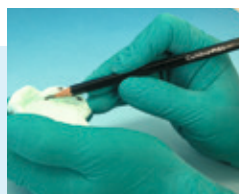


Wash impression

Place the tray gradually into the final position and assist the patient again with the functional intraoral movements to optimize the wash impression.



Positioning



Mark the high spots on the PSI impression.



Remove the PSI impression.



Grind the denture in the marked area.

▼ CLINICAL TIP

Quick detection of pressure spots

After fitting the denture, high spots can be easily detected using the Coltène Pressure Spot Indicator (PSI) (page 35).



The result: securely fixed

The captured detail of the framework with AFFINIS heavy body ensures that the metal framework is securely fixed in the impression and remains precisely in position when removing the impression.

Transfer impression



Framework and adhesive

Coating individual sections of the metal framework with Coltène adhesive.



Easy filling of the tray

The tray is filled quickly and easily with AFFINIS heavy body, System 360 using the automatic mixer.



Accurate detail

AFFINIS heavy body captures all details and covers the metal framework exactly.



Securely fixed

Metal framework remains exactly in position when removing the impression.



Retention beads not required

Even in extreme cases, apply Coltène Adhesive to individual sections of the framework to eliminate the use of laboratory fabricated retention beads. After the model fabrication, the adhesive can be easily removed by the technician using alcohol.



Easy control

Fill the crowns and bridges with Coltène Pressure Spot Indicator (Order No. 4440) and inspect the accuracy of the fit of the restoration before permanent cementation.

▼ CLINICAL TIP

MATERIAL CONSISTENCIES THAT MEET YOUR NEEDS

Wash materials

AFFINIS light body / regular body

AFFINIS wash materials wet the tooth and gingiva extremely quickly and effectively. Its hydrocolloid-like property ensure that the wash material flows into the narrowest areas without applying pressure. AFFINIS has a very low contact angle thanks to its structure-breaking property of the surfactant agent. The mixed material provides adequate stability and does not drip from the tooth.

AFFINIS PRECIOUS light body / regular body

AFFINIS PRECIOUS is the latest generation of wash materials. Its flow properties have been improved. The unique colours – silver and gold – facilitate readability of the impression detail. AFFINIS PRECIOUS wash materials have an application time of one minute. The thermo-active formula accelerates the setting process as soon as the impression tray is placed in the patient’s mouth.



50 ml
Cartridge



25 ml
microSystem™



AFFINIS
light body



AFFINIS
regular body



50 ml
Cartridge



25 ml
microSystem™

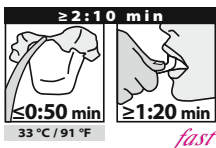
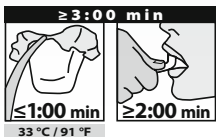


AFFINIS PRECIOUS
light body

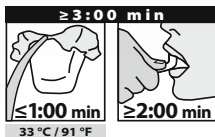


AFFINIS PRECIOUS
regular body

Clinical setting times



Clinical setting times



Monophase, wash and tray material

AFFINIS MonoBody

Monophase material has outstanding wetting properties in a moist environment and actively displaces moisture.

The surface affinity of AFFINIS is comparable to the hydrophilic properties of a polyether or hydrocolloid impression material. The outstanding thixotropy and innovative wetting technology of AFFINIS MonoBody prevents entrapment of air voids and distortions at the gingival margin. The impression is easily removed and a high tear resistance is guaranteed, so that all details are captured even in undercut areas.

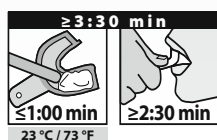


AFFINIS
System 360

75 ml
Cartridge

AFFINIS
MonoBody

Clinical setting times



Tray material

AFFINIS heavy body / heavy body fast

The high consistency and rapid build up of pressure for AFFINIS heavy body produces strong compression, making this tray material ideal for the one-step putty/wash technique. Buccal and palatal areas can also be easily reproduced with AFFINIS heavy body.



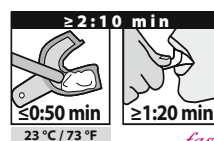
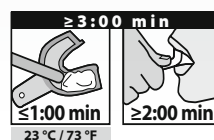
AFFINIS
System 360

75 ml
Cartridge

50 ml
Cartridge

AFFINIS
heavy body

Clinical setting times



AFFINIS System 360 putty

A genuine putty from a large cartridge. It provides a firm consistency immediately after being extruded from the mixing unit. It does not adhere to gloves and can be molded immediately into the tray to accommodate the clinical situation.



AFFINIS
System 360 putty

AFFINIS Putty super soft

AFFINIS putty super soft is a very smooth putty, which can be easily mixed to a homogeneous consistency. Super soft putty is ideal for all one-step putty/wash techniques.



AFFINIS
Putty super soft

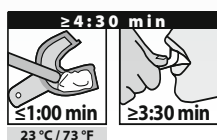
AFFINIS Putty soft

AFFINIS putty soft is a standard putty in the AFFINIS putty range. The compatible consistencies of the base and catalyst ensure for quick and easy mixing.



AFFINIS
Putty soft

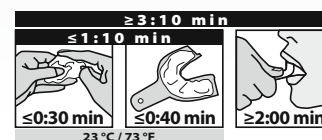
Clinical setting times



Clinical setting times



Clinical setting times



APPLICATION OF AFFINIS[®]

**Two different technologies are available
for the application systems:**

microSystem[™]

The patented Coltène microSystem cartridges and mixing tips prevent cross-contamination of base and catalyst. The microSystem is compact and practical. This allows the impression material to be applied directly around the preparation from the dispenser. Material waste is minimized thanks to the small mixing tips.



50 / 75ml Cartridge system

The standard dispenser can be used to fill the impression tray directly from the cartridge or for syringing intra-orally around the preparations.



micro.



AFFINIS®PRECIOUS: Perfect, convenient, reliable.

System 360

AFFINIS putty, MonoBody and heavy body in the 5:1 **Cartridge** (content 380ml) will fit all commercially-available automated mixing machines. The disposable 380ml-Cartridge is pre-filled and ready to use immediately. With the large volume of material and a minimum amount of waste in the empty cartridge, the delivery system is very economical to put into action.



Putties

AFFINIS putties have an easy mixing consistency and are compatible with all AFFINIS wash materials.



TRAYS AND ADHESIVES

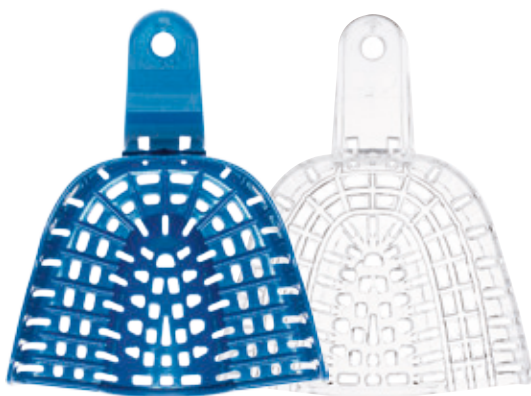
Coltène impression trays and adhesives

Impression trays

A patented system of ribs and rails provide plastic trays with a high degree of rigidity. The anatomical contour is the basis for an optimal impression.

Coltène Adhesive

A thin layer of Coltène Adhesive provides extra retention of the tray material in the tray.



AC



AC



Autoclavable PRESIDENT AC single-use impression trays and Coltène Adhesive AC

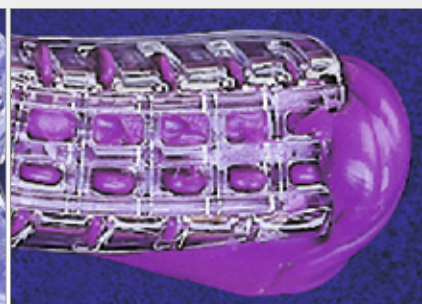
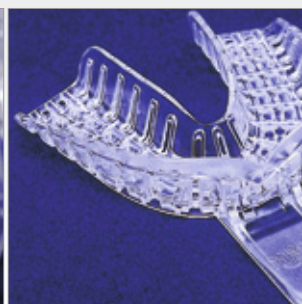
Maximum safety for autoclaving can only guaranteed when using components (AC) recommended by Coltène/Whaledent.

PRESIDENT single-use impression trays (transparent) and PRESIDENT AC single-use impression trays (blue)*

The patented system of ribs and rails provide plastic trays with a high degree of rigidity.

The anatomical contour is the basis for an optimal impression.

The tray design ensures that any type of impression material is reliably retained in the tray.



* Geometry is identical

BITE REGISTRATION

JET BLUE BITE

The mousse-like consistency of JET BLUE ensures that the patient can occlude completely naturally, without feeling any resistance. The material is applied directly from the cartridge using a special spreader tip.

Its extremely short, patient-friendly intraoral setting time rapidly captures the occlusion. After the bite registration has set, JET BLUE BITE has a final hardness of 89 Shore A. It retains a slight degree of elasticity, so that no details can break off the registration and it can still be trimmed or cut.

- ▶ remains in the exact position where you want it
- ▶ no bite resistance, no resilience
- ▶ high final hardness, yet still remains flexible enough for minor adjustments

Select the appropriate speed:

Fast – 30 sec. working time – 40 sec. intraoral setting time

Superfast – 20 sec. working time – 30 sec. intraoral setting time



Direct application of JET BLUE BITE FAST



Application of
JET BLUE BITE fast



Easy application
with the spreader tip



Ideal working time



Bite registration



CLINICAL REPORT

The quality of the impression material is decisive for the fitting accuracy and the long-term success rate of a fixed prosthetic restoration. It also saves time and treatment for the patient and the dentist if the impressions are accurate at the first try. This means that it is not necessary to take an impression a second time. Coltène/Whaledent is willing to go to great lengths in development work to come as close as possible to a perfect impression.

With AFFINIS PRECIOUS Coltène/Whaledent has optimised the surface affinity so that even in difficult situations the surface of the teeth will be thoroughly coated without problems and the material will not flow away uncontrolled. The flow behaviour has been optimised to an impressive degree, particularly in a moist environment.

The light-body and regular-body correction materials include unique gold and silver pigments designed to improve readability. They function like a mirror by reflecting the light rays into the eye of the observer. The light scatter is reduced, the light-dark contrast of the correction material is significantly increased and it improves the visual perception of details in the surface profile. Evaluation of the impression result is therefore easier and more secure. The well-known high accuracy of polyvinylsiloxane combined with the ideal processing and short oral dwelling time make these materials the first choice for use in making impressions of prosthetic constructions.



„AFFINIS / AFFINIS PRECIOUS high-quality impression material guarantees fabrication of accurately fitting, state-of-the-art prosthetic restorations.“

*Dr. med. dent. P. Heuzeroth
Winterthur, Switzerland*

Further user reports are available on our website:

► www.coltene.com

Clinical Report



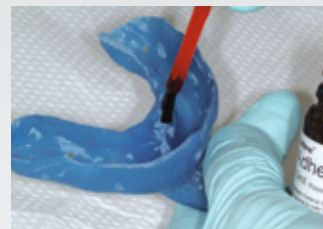
The situation with the skeletal prognathism meant that the patient had serious problems with chewing after the loss of tooth 46. Because he did not want an implant and wanted a restoration as quickly as possible, the manufacture of a conventional bridge was planned. The prior status of the abutment teeth (crown 47 and filling 45) made this solution appear ideal.



After extraction of the crowns and fillings and filling the defects in the teeth with dentine, the teeth were prepared for the new bridge.



To make the preparation margin on the impression obvious, the sulcus was opened and the gingiva slightly retracted with Magic FoamCord (Coltène/Whaledent) and counterpressure from the Comprecap anatomic.



While waiting for this procedure there was time to apply Coltène Adhesive to the prepared customised tray. One of the basic requirements for good impressions is the use of customfitted trays (or standard trays of the appropriate size). Sufficient pressure must be applied to the impression compound to ensure a good result. A tray that fits well increases the accuracy, because an evenly controlled layer thickness means fewer errors.



A sufficient quantity of AFFINIS PRECIOUS (light-body or regular body) was applied to the stumps and the correctly filled tray with the more viscous AFFINIS heavy body was placed in the mouth (single-step 2-phase impression).

When using this technique it is important to select the start time of filling the tray so filling and injection are finished simultaneously, because AFFINIS PRECIOUS sets quickly in the warm oral environment. The ideal processing time for stressfree application and the short oral dwelling time are features that make the procedure much easier for the user and of course for the patient. An experienced dental team is also very helpful when making impressions.

After removal of the tray a close check of the impression of the preparation margin is easy.

An accurately fitted bridge could now be fabricated in the dental laboratory for delivery into the mouth. AFFINIS as a high quality standing impression material guarantees an accurately fitted prosthetic restoration that conforms to the state of the art.

Product range

AFFINIS 50/75 System

| | | | |
|------|---|---|--------|
| 6501 | AFFINIS light body 50 ml Single Pack | 2 x 50 ml Cartridge, 12 x Mixing Tip Yellow | 1 A |
| 6601 | AFFINIS fast light body 50 ml Single Pack | | |
| 6511 | AFFINIS regular body 50 ml Single Pack | | |
| 6611 | AFFINIS fast regular body 50 ml Single Pack | | |
| 6775 | AFFINIS PRECIOUS light body Single Pack | | |
| 6776 | AFFINIS PRECIOUS regular body Single Pack | | |
| 6590 | AFFINIS heavy body 50ml Single Pack | 2 x 50 ml Cartridge, 6 x Mixing Tip Turquoise | 2 |
| 6650 | AFFINIS fast heavy body 50ml Single Pack | | |
| 6520 | AFFINIS heavy body 75 ml Single Pack | 2 x 75 ml Cartridge, 12 x Mixing Tip Turquoise | 2 |
| 6620 | AFFINIS fast heavy body 75 ml Single Pack | | |
| 6547 | AFFINIS MonoBody 75 ml Single Pack | | |
| 4405 | Coltène Adhesive AC 10ml | 1 pc. | |
| 4410 | Coltène Adhesive 10ml | | |
| 6900 | Dispenser 50/75 ml | | |
| 6550 | Mixing Tip Yellow | 40 pcs. | 1 |
| 6552 | Mixing Tip Turquoise | 40 pcs. | 2 |
| 6555 | Oral Tip Yellow | 100 pcs. | A |

AFFINIS microSystem

| | | | |
|------|--|--|--------|
| 6500 | AFFINIS light body microSystem™ Single Pack | 4 x 25 ml microSystem™ Cartridge, 20 x Mixing Tip Green, 20 pcs. Oral Tips | 3 B |
| 6600 | AFFINIS fast light body microSystem™ Single Pack | | |
| 6779 | AFFINIS PRECIOUS light body microSystem™ Single Pack | | |
| 6510 | AFFINIS regular body microSystem™ Single Pack | 4 x 25 ml microSystem™ Cartridge, 20 x Mixing Tip Clear, 20 pcs. Oral Tips | 4 B |
| 6610 | AFFINIS fast regular body microSystem™ Single Pack | | |
| 6780 | AFFINIS PRECIOUS regular body microSystem™ Single Pack | | |
| 6270 | microSystem™ Dispenser MK II | 1 pc. | |
| 6202 | Mixing Tip Green | 40 pcs. | 3 |
| 6205 | Mixing Tip Green | 100 pcs. | 3 |
| 6214 | Mixing Tip Clear | 40 pcs. | 4 |
| 6215 | Mixing Tip Clear | 100 pcs. | 4 |
| 6210 | Oral Tip White | 100 pcs. | B |

AFFINIS System 360

| | | | |
|------|---|---|--------|
| 6485 | AFFINIS System 360 heavy body Starter Kit | 1 x 380ml (Base and Cat.) 10 x Mixing Tip Yellow 1 x System 360 Fixation Ring | 5 |
| 6480 | AFFINIS System 360 MonoBody Starter Kit | | |
| 6471 | AFFINIS System 360 Putty Starter Kit | 1 x 380ml (Base and Cat.) 10 x Mixing Tip Yellow 1 x System 360 Fixation Ring | 7 D |
| 6487 | AFFINIS System 360 heavy body Refill Pack | 2 x 380ml (Base and Cat.) 1 x System 360 Fixation Ring | 7 |
| 6482 | AFFINIS System 360 MonoBody Refill Pack | | |
| 6472 | AFFINIS System 360 Putty Refill Pack | 2 x 380ml (Base and Cat.) 1 x System 360 Fixation Ring | 7 D |
| 4418 | Impression Syringe | 50 pcs. | |
| 6162 | Dynamic Mixing Tip Yellow | 40 pcs. | 7 |
| 6163 | System 360 Fixation Ring | 1 pc. | D |

AFFINIS Putty

| | | | |
|------|--------------------------------------|-------------------------------|--|
| 6530 | AFFINIS putty soft Single Pack | 300 ml Base and Catalyst each | |
| 6531 | AFFINIS fast putty soft Single Pack | | |
| 6535 | AFFINIS putty super soft Single Pack | | |

Overview of the mixing- and oral tips



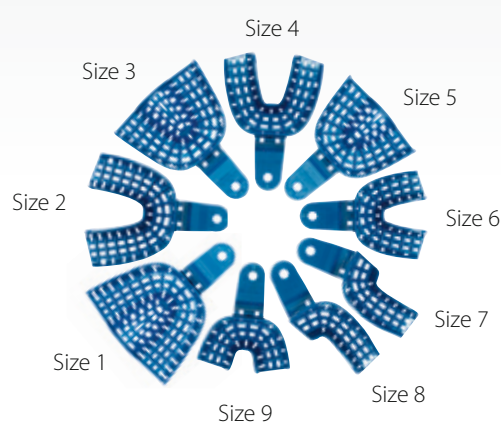
Impression trays / Bite registration materials

PRESIDENT Standard single-use trays

| | | |
|--------------|--|---------|
| C6901 | Size 1 Upper, large | 12 pcs. |
| C6902 | Size 2 Lower, large | |
| C6903 | Size 3 Upper, medium | |
| C6904 | Size 4 Lower, medium | |
| C6905 | Size 5 Upper, small | |
| C6906 | Size 6 Lower, small | |
| C6907 | Size 7 Quadrant Upper left/Lower right | |
| C6908 | Size 8 Quadrant Upper right/Lower left | |
| C6909 | Size 9 Anterior Upper/Lower | |

PRESIDENT Autoclavable single-use trays

| | | |
|--------------|--|---------|
| C6950 | Size 1 Upper, large | 12 pcs. |
| C6951 | Size 2 Lower, large | |
| C6952 | Size 3 Upper, medium | |
| C6953 | Size 4 Lower, medium | |
| C6954 | Size 5 Upper, small | |
| C6955 | Size 6 Lower, small | |
| C6956 | Size 7 Quadrant Upper left/Lower right | |
| C6957 | Size 8 Quadrant Upper right/Lower left | |
| C6958 | Size 9 Anterior Upper/Lower | |



JET BLUE BITE

| | | | |
|-------------|--|---|----------------------|
| 6491 | JET BLUE BITE fast 50 ml Single Pack | 1 × 50 ml Cartridge, 6 × Mixing Tip Pink, 6 × Spreader Tips | 6 C |
| 6493 | JET BLUE BITE superfast 50 ml Single Pack | | |
| 6495 | JET BLUE BITE fast 50 ml Refill Pack | 4 × 50 ml Cartridge, 12 × Mixing Tip Pink, 12 × Spreader Tips | 6 C |
| 6497 | JET BLUE BITE superfast 50 ml Refill Pack | | |
| 6551 | Mixing Tip Pink | 40 pcs. | 6 |
| 6223 | Spreader Tips | 100 pcs. | C |
| 6900 | Dispenser 50/75 | 1 pc. | |

Magic FoamCord

| | | | |
|-------------|---------------------------------|--|----------------------|
| 6735 | Magic FoamCord Intro Kit | 2 × 50 ml Cartridge, 10 × Mixing Tip Yellow, 10 × Oral Tips Yellow, 45 × Comprecap anatomic | 1 A |
|-------------|---------------------------------|--|----------------------|

PSI – Pressure Spot Indicator

| | | | |
|-------------|------------------------|---------------------------------------|--|
| 4440 | PSI Single Pack | 1 × 20 ml Activator 1 × 55 ml Base | |
| 4445 | PSI Activator | 1 × 20 ml Activator | |

JET BLUE BITE is a trademark of Coltène/Whaledent, JET BLUE is a registered trademark of Coltène/Whaledent AG, internationally, excluding the U.S.

In North America, please add the letter C before each item number when ordering

THE AFFINIS FAMILY



© 2014 Coltène/Whaledent AG – www.coltene.com

Coltène/Whaledent Ltd.

The President Suite-A
Kendal House, Burgess Hill,
Victoria Way
West Sussex, RH15 9NF / U.K.
Tel +44 1444 235486
Fax +44 1444 870640
info.uk@coltene.com

Coltène/Whaledent AG

Feldwiesenstrasse 20
9450 Altstätten / Switzerland
Tel +41 71 757 5300
Fax +41 71 757 5301
info.ch@coltene.com

Coltène/Whaledent Inc.

235 Ascot Parkway
Cuyahoga Falls, Ohio 44223 / USA
Tel +1 330 916 8800
Fax +1 330 916 7077
info.us@coltene.com

 **COLTENE**