

A close-up, high-angle photograph of a dental impression. The impression is a deep, circular, yellowish-brown cavity in a light-colored, textured material. The lighting is warm and focused on the center of the impression, creating a sense of depth and precision.

**AFFINIS<sup>®</sup>**

**Perfect Impressions**

## From the practice for the practice

While loading the tray with AFFINIS heavy body or putty soft, apply AFFINIS wash material light or regular body to the preparation. The unique surface affinity and the carefully adjusted flow properties of the AFFINIS wash materials, which correspond to a hydrocolloid, prevent air entrapments and margin distortions. The ideal timing of AFFINIS makes the procedure effective and time-saving.

During the short setting phase the tray must be held in position. The impression can be easily removed and the high tensile strength guarantees that all details remain unchanged even in undercut areas. The guaranteed dimensional change of less than 0.2% and the perfect impression accuracy of the preparation margins and die contours are the ideal basis for the dental technician to fabricate an accurate restoration.

Never has impression taking been so convenient and precise.



**W. Müller, Dr. univ. med. dent.**  
**Prosthodontist (Austria)**



**AFFINIS light and regular body are available in a 50 ml and 25 ml cartridge system.**

**Total setting time:**

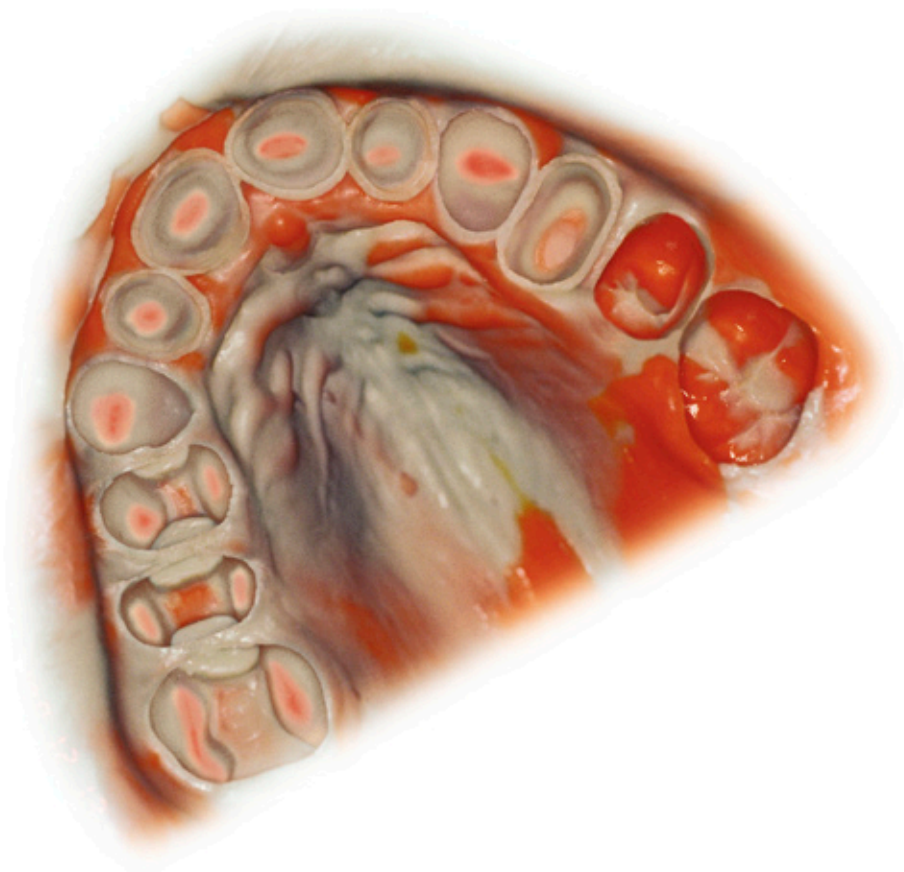
AFFINIS	Dimensional change in %	End hardness in Shore A	Working time	Total setting time
<b>75 ml</b>				
heavy body	– 0.2	60	max. 60 s	min. 120 s
fast heavy body	– 0.2	60	max. 50 s	min. 80 s
<b>putty</b>				
putty soft	– 0.2	63	max. 70 s	min. 120 s
fast putty soft	– 0.2	63	max. 65 s	min. 110 s
putty super soft	– 0.2	63	max. 65 s	min. 120 s
<b>50 ml / microSystem™</b>				
light body	– 0.2	48	max. 60 s	min. 120 s
regular body	– 0.2	50	max. 60 s	min. 120 s
fast light body	– 0.2	48	max. 50 s	min. 80 s
fast regular body	– 0.2	50	max. 50 s	min. 80 s



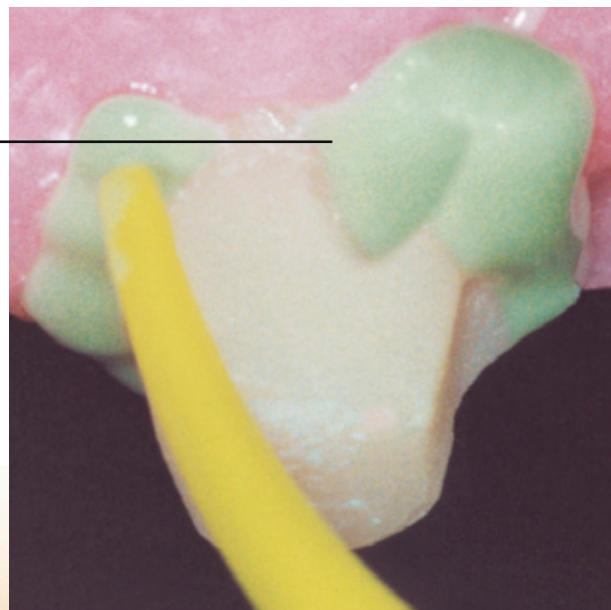
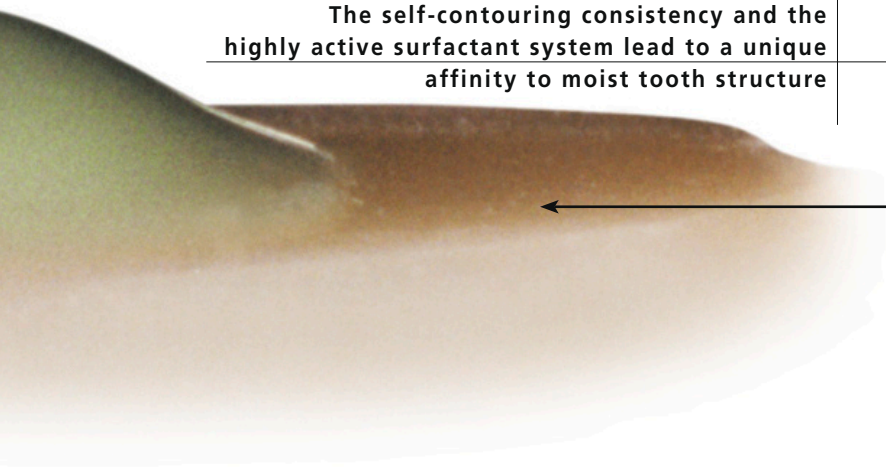
# The solution: AFFINIS

Contact angle on moist tooth surface

The perfect impression



The self-contouring consistency and the highly active surfactant system lead to a unique affinity to moist tooth structure



*The unique surface affinity of AFFINIS prevents air entrapments and margin distortions*



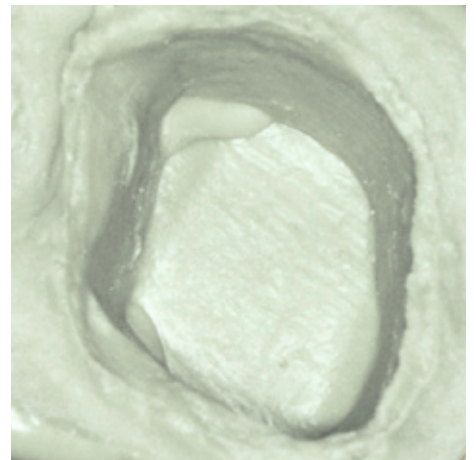
# Unique surface affinity and ideal flow properties lead to perfect impressions



*Self-contouring consistency and optimal flowability*



*AFFINIS does not drip off the preparation*



*No voids or margin distortions*

## AFFINIS - a new bench mark in impression technology

AFFINIS, an A-Silicone, differs in three characteristic features from other surface activated impression materials.

### Unique surface affinity

The differentiating element of AFFINIS is a fast and unique affinity of mixed material to moist tooth structure and tissue (gingiva). With its hydrocolloid-like flow properties, affinis reaches all critical areas without the need of pressure from the tray material.

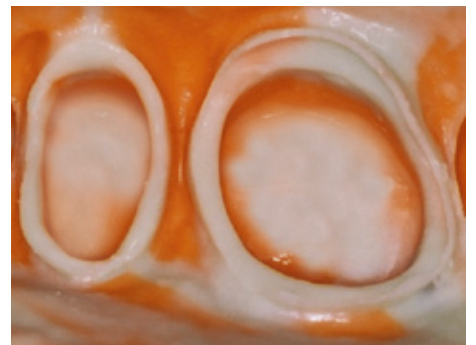
### Optimized flow

Typically, the addition of surfactants not only provides improved wetting but unfortunately creates a flow limit of the impression material.

As a consequence, the material tends to entrap air. AFFINIS however, based on its unique combination of additives which are capable of breaking material structures, displays a very low barrier to flow (self-contouring consistency) and this prevents air entrapments. At the same time, the mixed material is optimal thixotropic not to drip off the preparation.

### Better models

AFFINIS, due to its synergistic and extremely active surfactant system, displays a fast and outstanding wetting by water of the set impression. When pouring the gypsum, the dental technician will appreciate these properties.



*A no void AFFINIS impression*

**The perfect AFFINIS impression is the key to accurate restorations. It is the basis for the successful teamwork between dentist and dental technician.**



*AFFINIS – model situation as seen by the dental technician (no margin distortions)*

## Cause and Effects

Contact angle on moist tooth surface

### Innovative surface affinity

The surface affinity of a defined volume of unbonded impression material will take an impression after 10 seconds on moist dentine. This in vitro method shows which impression materials demonstrate ideal flow properties on a moist tooth surface. These properties allow AFFINIS to flow to all clinically relevant points without application of pressure to form the basis of an accurately fitted dental restoration.



## Initial wettability on moist tooth surface



Product A



Product B



Product C



Product D



Product E

Defined volume of freshly mixed impression materials on moist dentine – 10 seconds after application

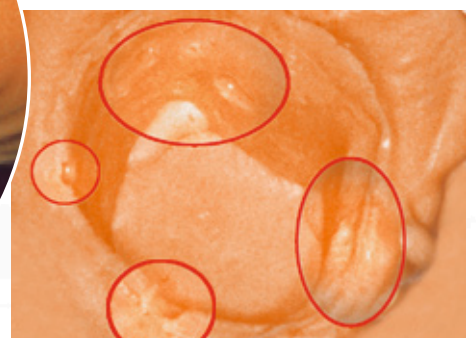
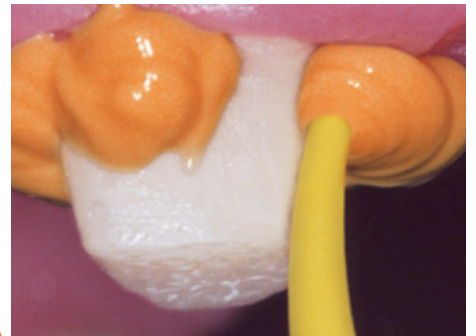




Missing affinity of the impression material to moist tooth structure leads to air entrapments.



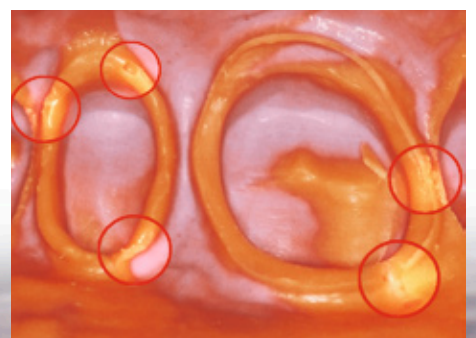
*Missing self-contouring consistency and insufficient flowability*



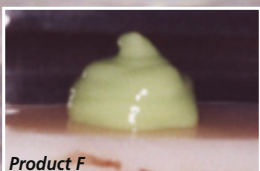
*With the pressure of the tray material these air entrapments lead to margin distortions*

Any impression material with missing surface affinity leads to air entrapments and voids. This can result in cavities, defective points, margin distortions or distortions in the impression.

The consequence is inaccuracies in dental restorations.



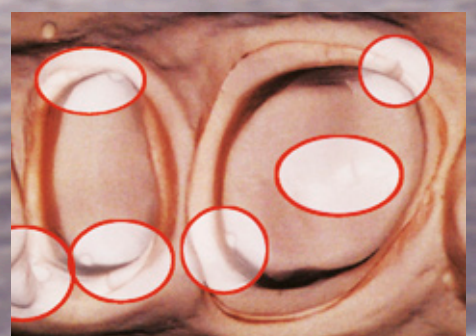
*Readability of the impression (voids)*



Product F



Product G



*Model situation as seen by the dental technician (margin distortions)*

# AFFINIS™ influences your success. All down the line.



<b>6530</b>	<b>AFFINIS™ putty soft</b> Base and Catalyst, each 300 ml
<b>6531</b>	<b>AFFINIS™ fast putty soft</b> Base and Catalyst, each 300 ml
<b>6535</b>	<b>AFFINIS™ putty super soft</b> Base and Catalyst, each 300 ml
<b>6520</b>	<b>AFFINIS™ heavy body 75 ml</b> 2 × 75 ml Cartridges, 8 pcs MT/TURQUOISE/CLEAR/WHITE/68/S*
<b>6620</b>	<b>AFFINIS™ fast heavy body 75 ml</b> 2 × 75 ml Cartridges, 8 pcs MT/TURQUOISE/CLEAR/WHITE/68/S*
<b>6547</b>	<b>AFFINIS™ MonoBody 75 ml</b> 2 × 75 ml Cartridges, 8 pcs MT/TURQUOISE/CLEAR/WHITE/68/S*
<b>6501</b>	<b>AFFINIS™ light body 50 ml</b> 2 × 50 ml Cartridges, 12 pcs MT/YELLOW/CLEAR/WHITE/69/S*
<b>6601</b>	<b>AFFINIS™ fast light body 50 ml</b> 2 × 50 ml Cartridges, 12 pcs MT/YELLOW/CLEAR/WHITE/69/S*
<b>6511</b>	<b>AFFINIS™ regular body 50 ml</b> 2 × 50 ml Cartridges, 12 pcs MT/YELLOW/CLEAR/WHITE/69/S*
<b>6611</b>	<b>AFFINIS™ fast regular body 50 ml</b> 2 × 50 ml Cartridges, 12 pcs MT/YELLOW/CLEAR/WHITE/69/S*

## Accessories: 50/75 System

<b>6900</b>	Dispenser 50/75 ml	1 pc
<b>6550</b>	MT/YELLOW/CLEAR/WHITE/69/S*	40 pcs
<b>6552</b>	MT/TURQUOISE/CLEAR/WHITE/68/S*	40 pcs
<b>6555</b>	Oral Tips, yellow	100 pcs

## Further information:

[www.coltenewhaledent.com](http://www.coltenewhaledent.com)

www.coltenewhaledent.com  
© 2008 Coltène/Whaledent AG

**Coltène/Whaledent Ltd.**  
The President Suite-A  
Kendal House, Burgess Hill  
Victoria Way  
West Sussex, RH15 9NF/U.K.  
Tel. +44 (0)1444 235486  
Fax +44 (0)1444 870640  
hq@coltenewhaledent.co.uk

<b>6487</b>	<b>AFFINIS™ System 360 heavy body</b> 2 × 300 ml Refill package Base, 2 × 62 ml Refill package Catalyst
<b>6485</b>	<b>AFFINIS™ System 360 heavy body Starter Kit</b> 1 × 300 ml Base, 1 × 62 ml Catalyst, 1 × Supporting Cartridge, 10 × MT/GREEN/CLEAR/WHITE/50/S*
<b>6482</b>	<b>AFFINIS™ System 360 MonoBody</b> 2 × 300 ml Refill package Base, 2 × 62 ml Refill package Catalyst
<b>6480</b>	<b>AFFINIS™ System 360 MonoBody Starter Kit</b> 1 × 300 ml Base, 1 × 62 ml Catalyst, 1 × Supporting Cartridge, 10 × MT/GREEN/CLEAR/WHITE/50/S*

## Accessories: System 360

<b>6160</b>	Supporting Cartridge	1 pc
<b>6161</b>	MT/GREEN/CLEAR/WHITE/50/S*	40 pcs

<b>6500</b>	<b>AFFINIS™ light body microSystem™</b> 4 × 25 ml Cartridges microSystem™, 20 pcs MT/GREEN/GREEN/WHITE/70/S*, 20 pcs Oral Tips
<b>6600</b>	<b>AFFINIS™ fast light body microSystem™</b> 4 × 25 ml Cartridges microSystem™, 20 pcs MT/GREEN/GREEN/WHITE/70/S*, 20 pcs Oral Tips
<b>6510</b>	<b>AFFINIS™ regular body microSystem™</b> 4 × 25 ml Cartridges microSystem™, 20 pcs MT/CLEAR/CLEAR/WHITE/70/S*, 20 pcs Oral Tips
<b>6610</b>	<b>AFFINIS™ fast regular body microSystem™</b> 4 × 25 ml Cartridges microSystem™, 20 pcs MT/CLEAR/CLEAR/WHITE/70/S*, 20 pcs Oral Tips

## Accessories: microSystem™

<b>6270</b>	Dispenser microSystem™	1 pcs
<b>6214</b>	MT/CLEAR/CLEAR/WHITE/70/S*	40 pcs
<b>6215</b>	MT/CLEAR/CLEAR/WHITE/70/S*	100 pcs
<b>6202</b>	MT/GREEN/GREEN/WHITE/70/S*	40 pcs
<b>6205</b>	MT/GREEN/GREEN/WHITE/70/S*	100 pcs
<b>6210</b>	Oral Tips	100 pcs

\* MT = Mixing Tip  
P = Pointed  
S = Straight

## Coltène/Whaledent AG

Feldwiesenstrasse 20  
9450 Altstätten/Switzerland  
Tel. +41 (0)71 757 53 00  
Fax +41 (0)71 757 53 01  
office@coltenewhaledent.ch

## Coltène/Whaledent Inc.

235 Ascot Parkway  
Cuyahoga Falls, Ohio 44223/USA  
Tel. +1 330 916 8800  
Fax +1 330 916 7077  
productinfo@coltenewhaledent.com

**coltène**  
**whaledent**