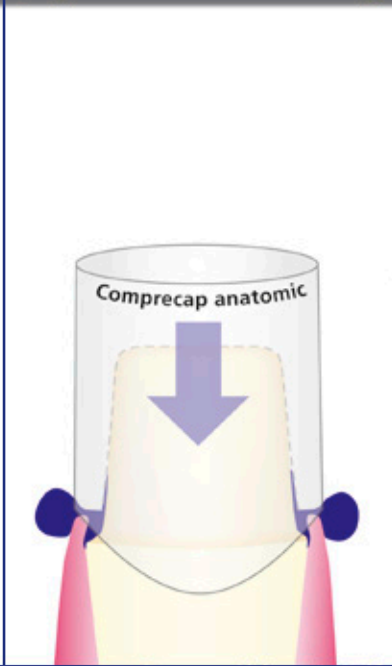


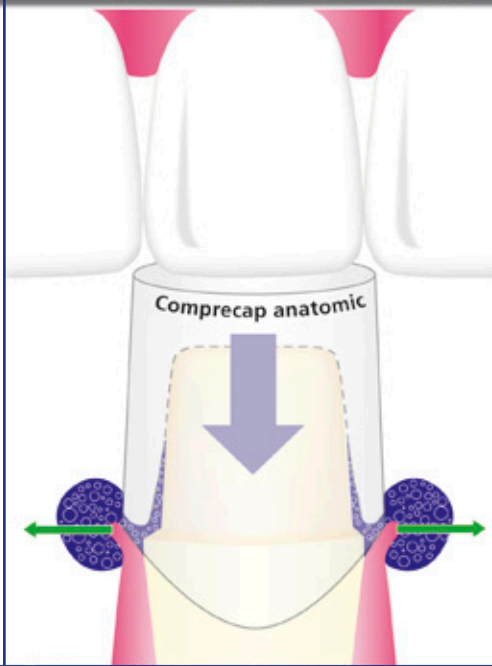
1



2



3



4



**Magic
FoamCord®**

**Gingiva retraction
without cords!**

Magic FoamCord®

Magic FoamCord® had been developed in a free partnership with Prof. DDr. Dumfahrt and is the first expanding PVS material designed for easy and fast retraction of the sulcus without the potentially traumatic and time consuming packing of retraction cord.

How it works!



0 min*

2 min*

5 min*

Foaming action complete

Material completely cured
Total Expansion = 160 %

How to use it!

*Time expressed at oral setting temperatures

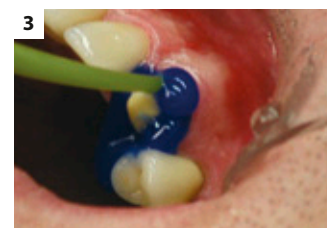
Comprecap anatomic Technique



1
Crown preparation prior to retraction



2
Pre-fit one Comprecap anatomic per crown preparation



3
Apply Magic FoamCord around the preparation

Note:



For multiple preparations use multiple Comprecaps



4
Place Comprecap and have the patient bite and maintain pressure on the Comprecap



5
Easy removal of Comprecap anatomic with Magic FoamCord in one piece after 5 min.



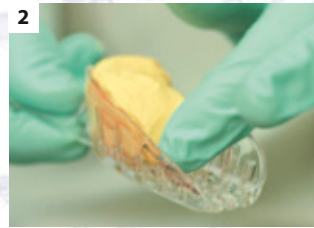
6
The result is a wide open sulcus with clear access to the prepared margins

The First Expanding PVS Retraction Material

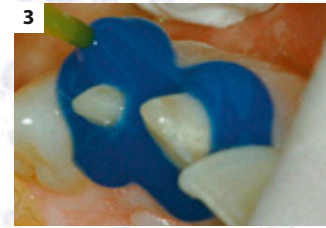
Alternative Putty Technique



1 Preparations prior to retraction



2 President Impression Tray with AFFINIS putty super soft



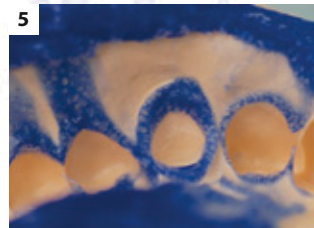
3 Apply Magic FoamCord around the preparations

Note:

- Use soft type Putty
- Minimal oral setting time 2 min 30 s



4 Position impression Tray and remove impression Tray after 5 min



5 Putty-Impression with Magic FoamCord – easy and fast removal



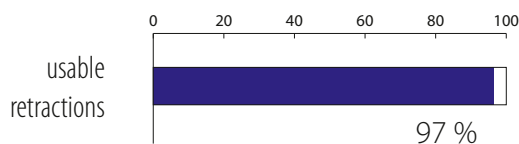
6 The result is a wide open sulcus with clear access to the prepared margins

Benefits

- Non-traumatic method of temporary gingival retraction
- Easy and fast application directly to the sulcus without pressure or packing
- Comfortable to the patient
- No haemostatic chemicals to contaminate the impression site – no need for extensive rinsing
- Outstanding retraction for perfect impressions

Clinical proven performance

University of Innsbruck, Austria
Clinical study of Magic FoamCord[®]

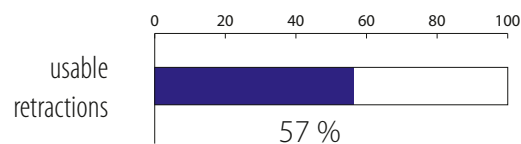


Conclusion (Prof. DDR. H. Dumfahrt):

97 % usable retractions with Magic FoamCord[®], which lead to a perfect impression

University of Freiburg, Germany
Clinical comparison of Expa-syl^{TM*}

*Expa-sylTM is not a trademark of Coltène/Whaledent



Conclusion (A. Manolakis, IADR 2004):

57 % usable retractions with Expa-syl^{TM*}



Order Information

Magic FoamCord Intro Kit	6735
Cartridges	2 x 50 ml
Mixing Tip Yellow	30 pcs.
Oral Tip Yellow	30 pcs.
Comprecap anatomic	45 pcs.

Magic FoamCord Refill	6737
Cartridges	2 x 50 ml

Accessories: 50 ml System

Mixing Tip Yellow	40 pcs.	6550
Oral Tip Yellow	100 pcs.	6555

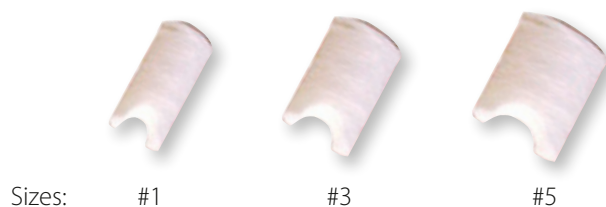
Comprecap anatomic New anatomic design for balanced compression. Available in 3 sizes

Comprecap anatomic Assorted (sizes: #1, #3, #5)	REF 531 299
	120 pcs.

Comprecap anatomic Grösse #1 Small – 7 mm	REF 531 201
	120 pcs.

Comprecap anatomic Grösse #3 Medium – 10 mm	REF 531 203
	120 pcs.

Comprecap anatomic Grösse #5 Large – 12.5 mm	REF 531 205
	60 pcs.



Sizes: #1 #3 #5

www.coltene.com
© 2011 Coltène/Whaledent AG

Coltène/Whaledent AG

Feldwiesenstrasse 20
9450 Altstätten / Switzerland
Tel +41 71 757 5300
Fax +41 71 757 5301
info.ch@coltene.com

Coltène/Whaledent Inc.

235 Ascot Parkway
Cuyahoga Falls, Ohio 44223 / USA
Tel +1 330 916 8800
Fax +1 330 916 7077
info.us@coltene.com

Coltène/Whaledent Ltd.

The President Suite-A
Kendal House, Burgess Hill, Victoria Way
West Sussex, RH15 9NF / U.K.
Tel +44 1444 235486
Fax +44 1444 870640
info.uk@coltene.com

 **COLTENE®**