

DUAL CURING BULK COMPOSITE

Fill-Up!™

Deep. Fast. Perfect.

 **COLTENE**
www.coltene.com

● Deep

- Dual-cure
- Self-curing, independent of layer thickness
- Cures even with very deep cavities

● Fast

- Immediate fabrication of the filling is possible, as Fill-Up! is light-cured for just 5 s
- No top layer necessary, thanks to outstanding mechanical properties
- Universal shade (VITA™ A2–A3) provides excellent self-blend properties
- Fast and simple automix application

● Perfect

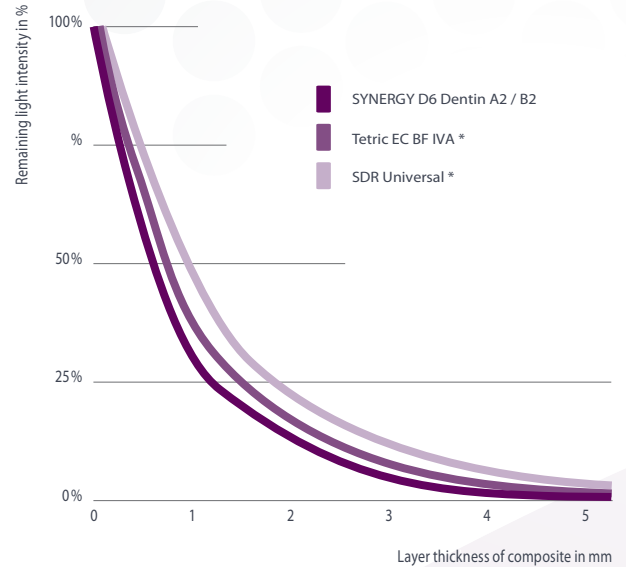
- Minimal shrinkage stress
- Optimal marginal sealing with the matched ParaBond bonding agent
- Easy to polish to a high luster
- Attractive aesthetics under all lighting conditions thanks to fluorescence
- Contains zinc oxide

Deep uniform curing

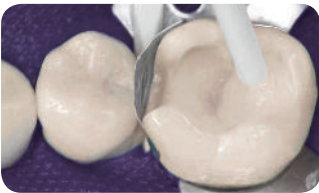
No matter what layer thickness is applied, there is no need to worry about thorough curing, as Fill-Up!™ consists of both light and chemically curing properties.

Other light curing bulk fill materials can be applied in layers of max. 4-5 mm. Light intensity measurements demonstrate that above a layer thickness of just 1 mm, light penetration drops drastically. Reliable deep polymerization is therefore not always guaranteed, which can lead to postoperative sensitivities.

Light absorption by composites¹



For fast results you can always be proud of



Apply in a single step



Light cure for 5 s or wait for the chemical setting



Adapt and polish the filling



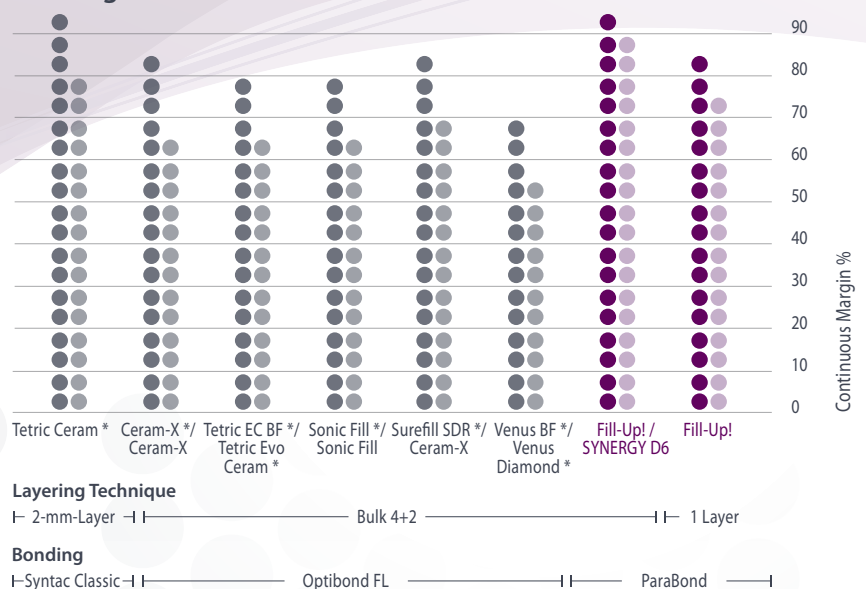
Final result

Two that work together perfectly

Fill-Up!™ and ParaBond adhesive system are perfectly matched. ParaBond accelerates polymerization at the cavity margins, which optimizes the marginal sealing of the filling. This specifically prevents the formation of marginal gaps and secondary caries.

Study results from the University of Geneva attest Fill-Up!™ has the best marginal sealing values before and after chewing simulation (thermo-mechanical cycling).

Marginal adaptation before and after chewing simulation^{2,3,4}

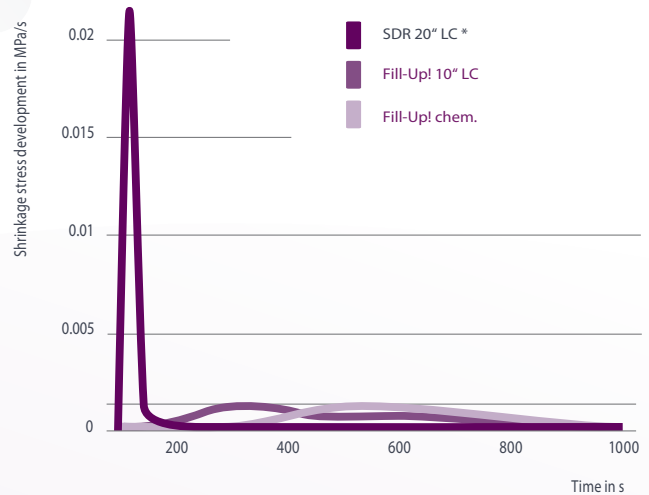


Gentle and safe into depth

Large cavities that are filled with just one layer are subject to high shrinkage forces upon curing with light. However, the chemical curing proceeds much more gently (see graphic).

And if speed is of the essence, Fill-Up!™ can be light cured. The restoration can then be finished immediately, whereas deeper regions are chemically post-cured.

Shrinkage stress development at curing ¹

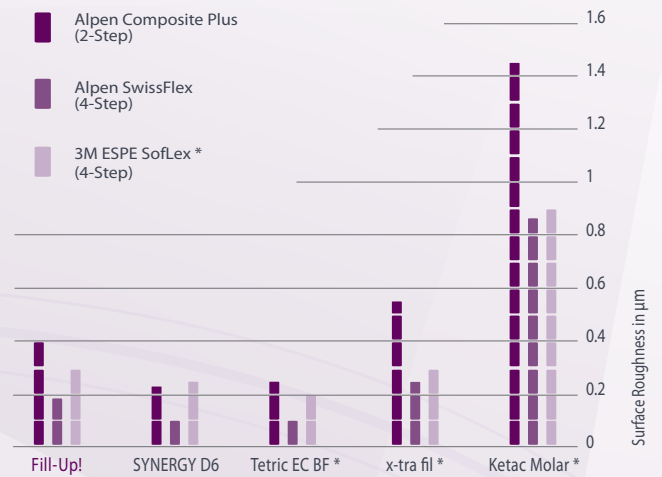


Polishes to high gloss

Fill-Up!™ is effortlessly polished to a shine. Studies confirm the superb polishing results together with 2-Step Alpen Composite Plus Polishers and 4-Step Alpen SwissFlex Discs.

Fill-Up!™ displayed a very low surface roughness after polishing that is comparable with light-cured composites.

Surface Roughness after Polishing ⁵



Perfect details ¹

Flexural modulus..... 7.260 MPa
 Flexural strength..... 109 MPa
 Water sorption 19 µg/mm³
 Water solubility..... 0.7 µg/mm³
 Radiopacity..... 2 mm Al
 Vickers hardness..... 51 HV
 Volumetric shrinkage (acc. to Watts) .. 3.3%

Compressive strength..... 289 MPa
 Ø filler particle size 2 µm
 Filler content by weight 65 %
 Filler content by volume 49 %
 Density..... 1.8 g/cm³
 Working time..... 1 min
 Setting time (not incl. working time) 2 min

Composition:

- Dental glass
- Amorphous silicic acid
- Methacrylates
- Zinc oxide



Point for point a direct hit

Varied applicability:

This medium-viscosity, dual curing bulk composite has been developed for those indications that demand fast, aesthetic and tooth-colored restoration.

Fill-Up!™ is suitable for bulk fill technique in the posterior region and can be applied in a single layer of any depth. Surface light curing for only 5 s can finish the restoration with no top layer needed.

Fill-Up!™ is indicated for:

- Class I and II cavities
- Cavity lining
- Core build-ups

A shade for every case:

Thanks to its chameleon effect, the universal shade between the levels VITA™ A2–A3 adapts perfectly to every situation and saves time on shade management.

In perfect interaction with ParaBond - the bonding agent for an optimized marginal seal - it presents a well-rounded system for all everyday restorative situations in the dental practice.

Hole in One

Only one step away from a perfect result



Order information



Fill-Up!™

Dual curing bulk composite

6001 9341	Fill-Up!™ Refill
1 × 4.5 g	Fill-Up!™ Universal
3 ×	Mixing Tip Short Super Fine
4 ×	Mixing Tip Short Fine
6747	Mixing Tip Short Super Fine
40 ×	Mixing Tip, ø 1 mm
6759	Mixing Tip Short Fine
40 ×	Mixing Tip, ø 1,8 mm

6001 9342	Fill-Up!™ Intro Kit
2 × 4.5 g	Fill-Up!™ Universal
1 × 2.5 ml	Etchant Gel S
2 × 3 ml	ParaBond Adhesive A & B
6 ×	Mixing Tip Short Super Fine
8 ×	Mixing Tip Short Fine

6001 9355	Fill-Up!™ Economy Kit
5 × 4.5 g	Fill-Up!™ Universal
15 ×	Mixing Tip Short Super Fine
20 ×	Mixing Tip Short Fine



Etchant Gel S

Ultimate etchant gel

7373	Etchant Gel S Kit
2 × 2.5 ml	Syringes
20 ×	Application Needles
7876	Application Needles
20 ×	black



ParaBond

Chemically curing adhesive system

7493	ParaBond Adhesive A & B Refill
1 × 3 ml	ParaBond Adhesive A
1 × 3 ml	ParaBond Adhesive B



* not a trademark of COLTENE

¹ Internal measurement

² Krejci et. al. 2014, Marginal adaptation of bulk filled dual cured composites, publication prepared for ADM meeting

³ Krejci et. al. 2014, Marginal adaptation of class II cavities restored with bulk-fill composites, Journal of Dentistry

⁴ Besek et. al., zahncfarbene adhäsive Füllungen, PPK Zürich 2004

⁵ Dr. Flury, University of Bern, data on file

© 2015 Coltène/Whaledent AG - www.coltene.com

Coltène/Whaledent Inc.
235 Ascot Parkway
Cuyahoga Falls, OH 44223 / USA
Tel. USA & Canada + 1 800 221 3046
+ 1 330 916 8800
Fax +1 330 916 7077
info.us@coltene.com

Coltène/Whaledent AG 
Feldwiesenstrasse 20
9450 Altstätten / Switzerland
Tel. +41 (0)71 757 53 00
Fax +41 (0)71 757 53 01
info.ch@coltene.com

Coltène/Whaledent GmbH + Co. KG
Raiffeisenstrasse 30
89129 Langenau / Germany
Tel. +49 (0)7345 805 0
Fax +49 (0)7345 805 201
info.de@coltene.com



 **COLTENE**

P/N 31275A